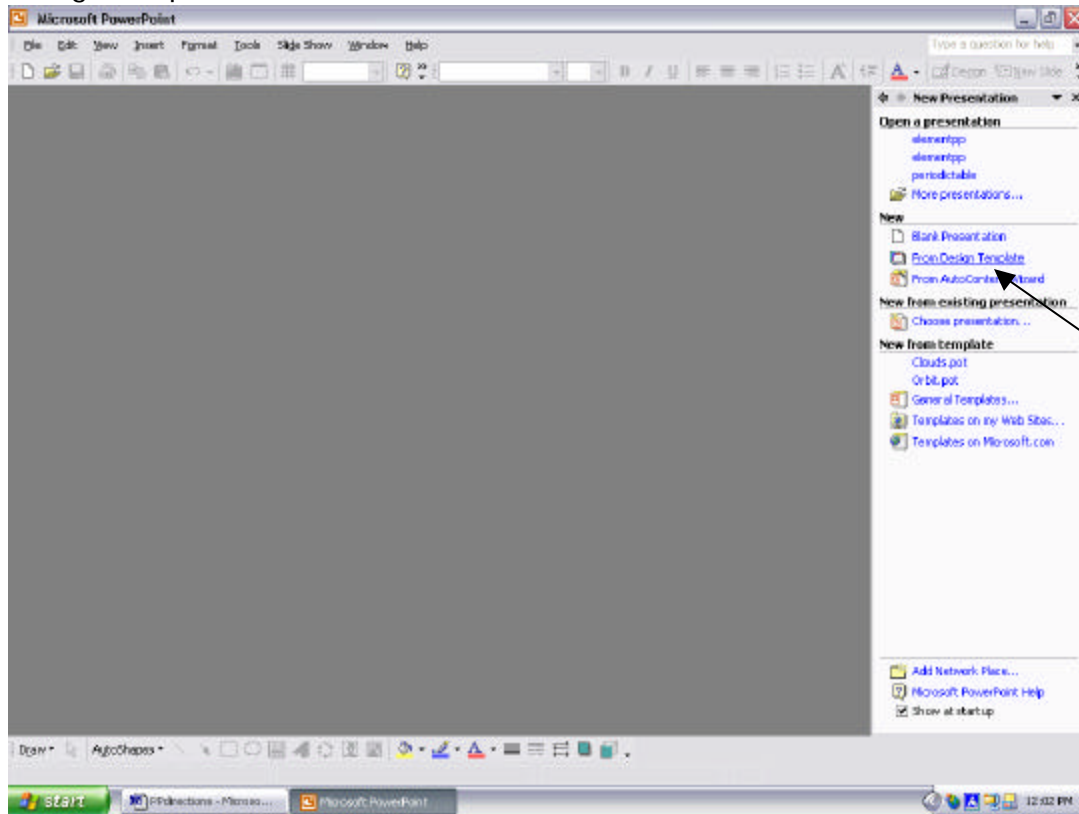
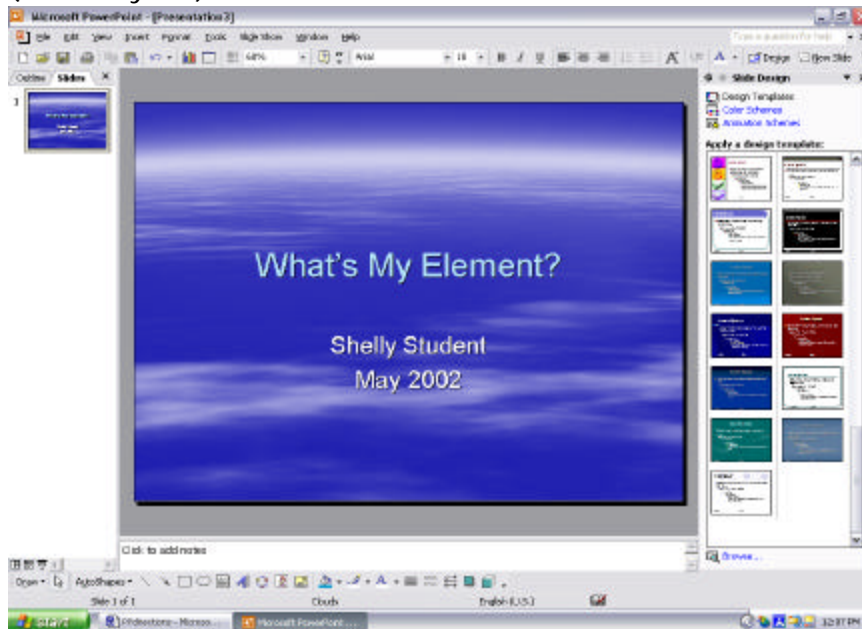


PowerPoint for 'What's My Element?'

1. Open PowerPoint, choose New: From DesignTemplate



2. Choose a background color for your presentation.
3. For the title slide, type 'What's My Element?' in the title box and your name and date (month, year) in the bottom text box.



4. Save your work in your folder.

- Click on the New Slide icon or Insert: New slide.
- Choose the slide that only has a title box at the top. Now create 6 more slides just like it.
- Go back to the first blank slide (should be number 2 on the slide sorter view). This slide will have your 'funny clue' plus an appropriate graphic. Look at the table below to see what kind of clues you should put on each slide.

Slide # 3	melting point or boiling point clue	graphic
Slide # 4	density or atomic weight clue	graphic
Slide # 5	classification clue	graphic
Slide # 6	atomic number clue	graphic (electronic structure)
Slide # 7	reveal your element's identity	graphic
Slide # 8	Resources list	on-line links

- Remember, your presentation will look different on the big projection screen from what it appears on your computer monitor. THINK BIG for font size! Text must be readable from the back of the room by ME!
- Save your work after every slide you create! It will save you from intense agony when you have located the perfect graphic and then lost it.
- Before you ask me to check your presentation, let the person next to you attempt to guess your element by sorting/filtering their database while they are following your slides. This will point out any problems in your presentation.